

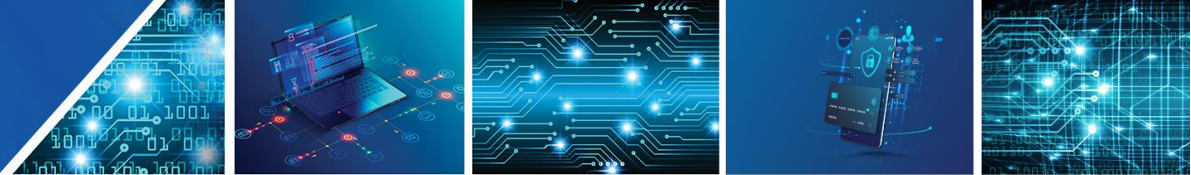


**PPL**<sup>®</sup>  
PROFESSIONAL PARCEL LOGISTIC

**Create package label**

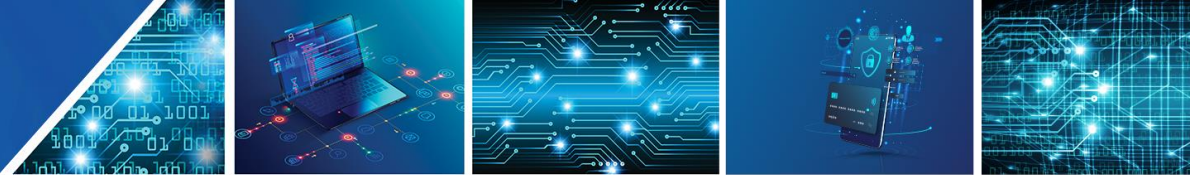
## Document version

Revision number	Date of validity	Revision description	The revision was carried out by / signature
1	19. 2. 2022	Origin of the draft documentation	Fňukal
2	12.5.2022	Methods for directories added. Change batch from ID to "Hash"	Fňukal
3	21.7.2022	New methods added	Fňukal
4	22.10.2022	New methods	Fňukal
5	27.4.2023	New methods	Fňukal
6	10.7.2023	New methods, new creating lables options, ...	Fňukal
7	9.9.2023	New methods, new creating lables options, SubjectId	Fňukal / Kaiseršat
8	23.11.2023	New function in shipment/batch – directInjection and selection QR / standard Label	Kaiseršat
9	5.3.2024	New type of externalNumber POSN for delivering to DE lockers lastUpdateDate information about last status update ZPL merge more labels to one response	Kaiseršat
10	10.5.2024	Added insurance to each one package in set separately To SK changed label to new DHL CommonLabel	Kaisersat
11	9.12.2024	Editing levels. Refinement of information for swagger. Added new methods, Editing tables with parameters. Added faulty response	Hromek



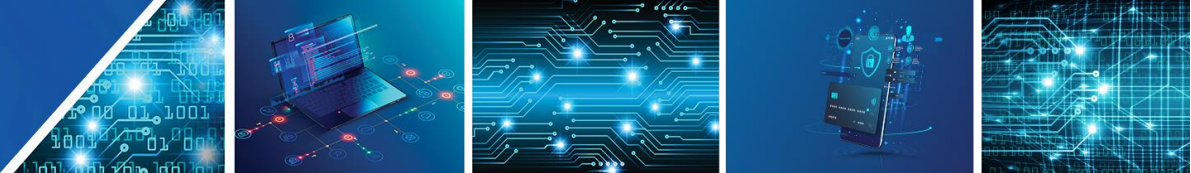
## Table of Contents / Index

<b>Document version</b>	<b>2</b>
<b>Table of Contents</b>	<b>3</b>
<b>Create package label - method description</b>	<b>5</b>
Restrictions	5
Labels	5
Connection	5
<b>Description of methods</b>	<b>6</b>
/shipment/batch - Shipment Creation	6
/shipment/batch/{batchId} – label creation statuses	10
/shipment/batch/{batchId} – shipment set editing	10
/shipment/batch/{batchId}/label - labels	10
/shipment – Shipment information	11
/shipment/{shipmentNumber}/cancel - Cancel	11
/shipment/{shipmentNumber}/redirect - Addition/change of information	11
/addressWhisper – Address whisperer	11
/accessPoint - List of Pick-up points	12
/data – label download	12
/order/batch – Order creation	13
/order/batch/{batchId} – order creation statuses	14
/order – Order tracking	14
/order/cancel – Cancel order	14
/codelist/servicePriceLimit – Services limits (COD, Insurance)	14
/codelist/service – Service codebook	15
/codelist/ageCheck – Codebook for the beneficiary's age verification service	15
/codelist/currency – Currency codebook	15
/codelist/country – Country codebook + COD permission	15
/codelist/externalNumber – External number codebook	15
/codelist/product – Product codebook	16
/codelist/proofOfIdentityType – Types of personal documents	16
/codelist/shipmentPhase – shipment phase	16
codelist/status – Shipment statuses /shipment	16
/codelist/validationMessage – Error messages	16



/info – API status info	16
/customer – customer information - permitted currencies	16
/customer/address - customer information – customer addresses	17
/versionInformation - Version information (news...)	17
<b>Enums – Other parametrs</b>	<b>18</b>
Import statuses	18
Address types codebook	18
Pick-up points type codebook - accessPointTypes	18
ReturnChannelModel – Type codebook	18
LabelSettingModel - Label format codebook	18
Label type codebook	19
<b>Examples of calls and answers</b>	<b>20</b>
Request	20
Response - Request Status:	22
Response - pick up labels (PDF A4)	23
Response - label pickup (ZPL)	24
Response - picking up labels (JPG)	25
Response – GET/shipment/batch - identification of an error shipment in the case of multiple pcs	25





# Create package label - method description

It serves as a simple means to implement and connect the customer and PPL CZ s.r.o. The customer is provided with access data, URL for calling the method(s). In the case of CreatePackageLabel (hereinafter CPL), the response to the customer is to generate a finished label/tag in the required formats without the need to maintain their current layout and also record the number series.

## Restrictions

Maximum number of shipments per request: 1,000

Maximum number of parcels per address: 20 in the request

Validity of batchID for getting label is 30 days

The maximum number of requests to generate tokens is 12 requests/min

The minimum interval between sending two consecutive requests is 40 ms

## Labels

The minimum label size is in case the customer prints on separate labels (e.g. thermolabels):

- In case of sending to **CZ** 127×110 mm.
- In case of sending **abroad** 150×100 mm.  
(see product and country code)

An alternative is A4 printed labels (4 labels per page).

## Connection

Connection/Authentication is done in OAuth 2.0 standard see <https://cs.wikipedia.org/wiki/OAuth> or <https://oauth.net/2/>

**Swagger:** (GET) <https://api.dhl.com/ecs/ppl/myapi2/swagger/v1/swagger.json>

Access token validity is 30 mins

please use whole validity of token, don't request new token for each request

Access token URL: <https://api.dhl.com/ecs/ppl/myapi2/login/getAccessToken>

Grant type: Client credentials

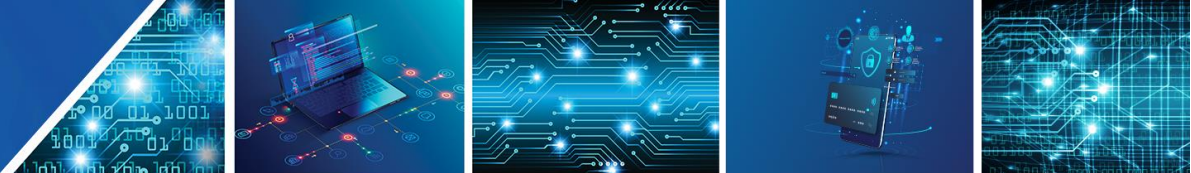
ClientID: individual

Client secret: individual

Scope: myapi2

Communication takes place at: <https://api.dhl.com/ecs/ppl/myapi2>

Test environment: <https://api-dev.dhl.com/ecs/ppl/myapi2>

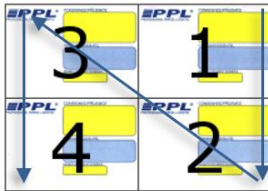


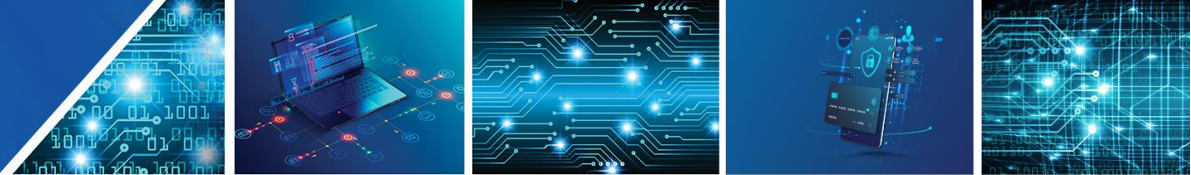
# Description of methods

## /shipment/batch - Shipment Creation

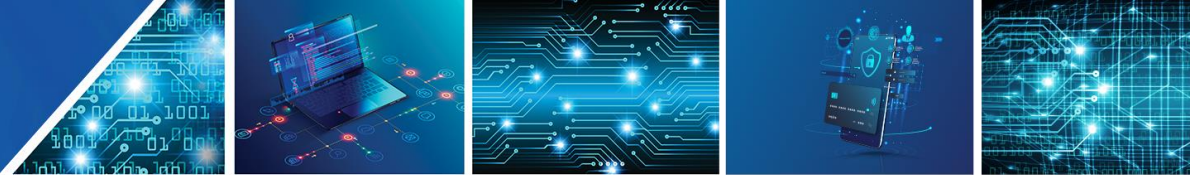
[POST] <https://api.dhl.com/ecs/ppl/myapi2/shipment/batch>

Used to create a shipment. The answer is in the **header (Location)**

Element name	Data type	Data format	Required field	Validation	Description
<b>returnChannel</b>					Return value section for label printing
- type	string		Yes	Validation by ReturnChannelType codebook	Label return path type. SFTP is not supported!
- address	string	Length: 100	No	If Type = Email is selected, then fill in your email address. If Type = Ftp is selected, then fill in the FTP path here.	Address: Email format: <a href="mailto:xxxxxxx@yyyy.zzz">xxxxxxx@yyyy.zzz</a> FTP format: ftp://user:password@host:port/path
<b>labelSettings</b>			yes		
- format	string	Length: 3	Yes	Validation by ReturnChannelFormat Codebook	Zpl, Pdf, Jpeg, Png, Svg
- dpi	int		No	DPI selection for ZPL	203 - 1200
- completeLabelSettings					ZPL base64 encoding, merge more labels into one response
-- isCompleteLabelRequested	boolean			True/false	Generates URL with all labels into one file (max 1,000 labels per request; max 20 per shipment)
-- pageSize			No	Only one value - "A4"	Label type (Default, A4)
-- position			No	1/2/3/4	 <p>Position on A4, to start printing</p>
<b>shipments</b>			yes		Information on shipments
- referencId	string	Length: 128	yes		Reference ID
- shipmentNumber			no		Package number
- productType			yes	Product codebook	Product type
- note	string	Length: 300	No		Note
- depot	string	Length: 2	No		Do NOT use
- ageCheck			no		Age check service (15,18+)
- integratorId			no		Integrator ID - only for type: integrator
- shipmentSet					
-- numberOfShipments					Number of packages per address
-- shipmentSetItems				50	Max 50
-- weighedShipmentInfo					
-- weight	decimal	Length: 9.2	Yes	Weight must >= 0	The weight of the shipment weighed by the client.
-- insurance					Insurance separately for each one package from set
-- insurancePrice	decimal	Length: 14,2	Ano	If is used InsurPrice then must be used insuranceCurrency too	Ranges from codelist/ServicePriceLimit
-- insuranceCurrency	string	Length: 3	Ano		Insurance can be used only from CZ national currency - CZK

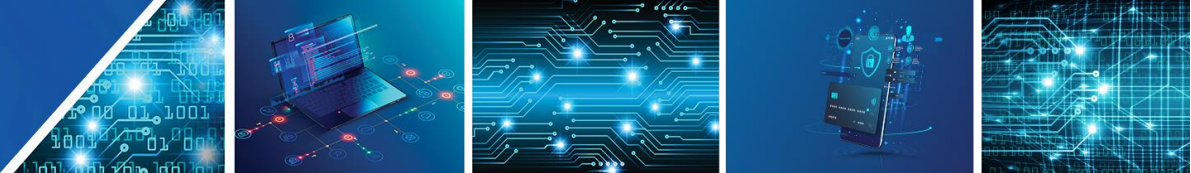


-- externalNumbers					External number for each label separately
-- externalNumber	string				
-- code	string				
- backAddress					Address for the return of undelivered shipments
-- name	string	Length: 50	Yes		Name / Company
-- name2	string	Length: 50	No		Name 2
-- street	string	Length: 60	Yes		Street
-- city	string	Length: 50	Yes		City
-- zipCode	string	Length: 10	Yes		ZipCode
-- country	string	Length: 2	Yes	<p>1. Validation by Country code</p> <p>2. If the shipment is an international shipment (PackProductType = COPL, BUED, IMPO, CONN, COND, SMEU, SMED), then the country of the sender must not be the same as the country of the receiver and this field is mandatory.</p> <p>3. If it is a domestic shipment (PackProductType = BUSS, BUSD, DOPD, DOPD, PRIV, PRID, RETD, SMAR, SMAD), then the country of the sender must equal the country of the receiver.</p>	Country code according to the Country codebook
-- contact	string	Length: 50	No		Contact person.
-- phone	string	Length: 30	No		Completed contact details significantly increase the success rate of delivery
-- email	string	Length: 50	No		Completed contact details significantly increase the success rate of delivery
- sender			Yes		Sender of the shipment
-- name	string	Length: 50	Yes		Name / Company
-- name2	string	Length: 50	No		Name 2
-- street	string	Length: 60	Yes		Street
-- city	string	Length: 50	Yes		City
-- zipCode	string	Length: 10	Yes		ZipCode
-- country	string	Length: 2	Yes	<p>1. Validation by Country code</p> <p>2. If it is an international shipment (PackProductType = COPL, BUED, IMPO, CONN, COND, SMEU, SMED), then the country of the sender must not be the same as the country of the receiver and this field is mandatory.</p> <p>3. If it is a domestic shipment (PackProductType = BUSS, BUSD, DOPD, DOPD, PRIV, PRID, RETD, SMAR, SMAD), then the country of the sender must equal the country of the receiver.</p>	Country code according to the Country codebook
-- contact	string	Length: 50	No		Contact person.
-- phone	string	Length: 30	No		
-- email	string	Length: 50	No		
- senderMask			Yes		Shipper - Alternate address (in case of a different shipper on the label than the one on record.
-- name	string	Length: 50	Yes		Name / Company
-- name2	string	Length: 50	No		Name 2
-- street	string	Length: 60	Yes		Street
-- city	string	Length: 50	Yes		City
-- zipCode	string	Length: 10	Yes		ZipCode
-- country	string	Length: 2	YES	Validation by Country code	Country code according to the Country codebook

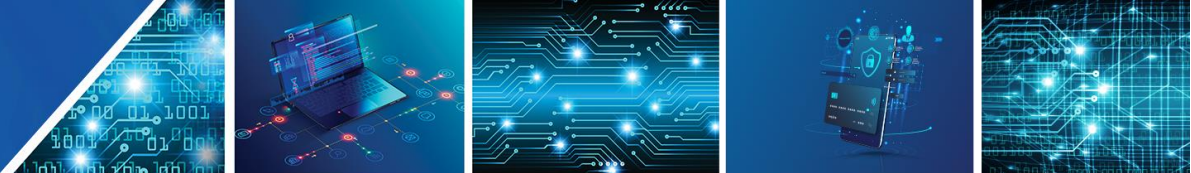


-- contact	string	Length: 50	No		Contact person.
-- phone	string	Length: 30	No		
-- email	string	Length: 50	No		
- recipient					
-- name		Length: 50			
-- name2	string	Length: 50	No		Contact person. In the case of a shipment to the Pick-up point, indicate the recipient's contact (name or company) here or duplicate <Name>
-- street		Length: 60			Street
-- city	string	Length: 50	No		City
-- zipCode	string	Length: 10	Yes	Ireland: Copy the city into the ZipCode; GB according to the model: A9 9AA A99 9AA A9A 9AA AA9 9AA AA99 9AA AA9A 9AA NL according to the model: 1234 AA	ZipCode
-- country	string	Length: 2	No	1. Validation by Country code 2. If it is an international shipment (PackProductType = COPL, BUED, IMPO, CONN, COND, SMEU, SMED), then the country of the sender must not be the same as the country of the receiver and this field is mandatory. 3. If it is a domestic shipment (PackProductType = BUSS, BUSD, DOPD, DOPD, PRIV, PRID, RETD, SMAR, SMAD), then the country of the sender must equal the country of the receiver.	Country
-- contact	string	Length: 50	No		Contact person. In the case of a shipment to the Pick-up point, indicate the recipient's contact (name or company) here or duplicate <Name>
-- phone	string	Length: 30	Yes		Telephone number
-- email	string	Length: 50	Yes		Email
- specificDelivery					
-- parcelShopCode	string	Length: 50	No	1. PackProductType only PRIV, PRID, CONN, COND, SMAR, SMAD !! 2. Validation against the list returned by the AccessPoint method	Pick-up point codebook
- cashOnDelivery					Payment information, cash on delivery products only.
-- IBAN	string	Length: 50	No	1. If IBAN is filled in, then the SWIFT field must also be filled in. 2. If IBAN and SWIFT are filled in, then BankAccount and BankCode cannot be filled in.	IBAN
-- swift	string	Length: 50	No	1. SWIFT, if filled in, then the IBAN field must also be filled in. 2. If IBAN and SWIFT are filled in, then BankAccount and BankCode cannot be filled in. 3. Validation by SWIFT	SWIFT
-- specSymbol	string	Length: 6	No	Limited to 0-10 numbers	Specific symbol
-- account	string	Length: 10	No	1. If BankAccount is filled in, then the BankCode field must also be filled in. 2. If BankAccount and BankCode are filled in, then IBAN and SWIFT cannot be filled in.	Bank account number





-- accountPre	string	Length: 10	No		Before bank account number
-- bankCode	string	Length: 4	No	1. If BankCode is filled in, then the BankAccount field must also be filled in. 2. If BankAccount and BankCode are filled in, then IBAN and SWIFT cannot be filled in. 3. Validation by Bank Code	Bank code
-- codPrice	decimal	Length: 12.4	No	1. If CodPrice is filled in, then CodCurrency must also be filled in. 2. The amount must not be negative. 3. The maximum amount can be found: <a href="#">PPL CZ product terms.pdf</a>	Cash on delivery amount. The amount is separated by a full stop. Only a positive number. If in CZK and country CZ, then rounded to whole amounts. See the codelist/servicePriceLimit
-- codCurrency	string	Length: 3	No	1. If CodCurrency is filled in, then CodPrice must also be filled in. 2. Validation by Currency code	Cash on delivery currency by Currency codebook
-- codVarSym	long	Length: 10	No	Limited to 0-10 numbers. If the CodCurrency or CodPrice elements are filled in, then CodVarSym must be filled in.	Variable COD symbol. Numbers ONLY
- insurance					
-- insurPrice	decimal	Length: 12.4	No	1. If InsurPrice is filled in, then InsurCurrency must also be filled in. 2. The amount must not be negative or zero 3. The maximum amount of insurance can be found <a href="#">PPL CZ product terms.pdf</a>	Amount of additional insurance. See the codelist/servicePriceLimit
-- insurCurrency	string	Length: 3	No	1. If InsurCurrency is filled in, then InsurPrice must also be filled in. 2. CZK only	The insurance can only be within our national currency - CZK
- externalNumbers					
-- externalNumber	string	Length: 50	Yes		External consignment number
-- code	string	Length: 4	Yes	Validation by codebook of external numbers	External number type code according to the codebook of external numbers
- services					
-- code	string	Length: 4	Yes	For product-specific services, see the Service codebook.	Service code. Validation by Services codebook
- dormant					
-- shipmentNumber					
-- note	string	Length: 300	No		Note
-- depot	string	Length: 2	No		<b>Do not use</b>
-- recipient					
--- name	string	Length: 50	Yes		Name
--- name2	string	Length: 50	No		Name 2
--- street	string	Length: 60	Yes		Street
--- city	string	Length: 50	Yes		City
--- zipCode	string	Length: 10	Yes		ZipCode
--- country	string	Length: 2	YES	1. Validation by Country code 2. If it is an international shipment (PackProductType = COPL, BUED, IMPO, CONN, COND, SMEU, SMED), then the country of the sender must not be the same as the country of the receiver and this field is mandatory. 3. If it is a domestic shipment (PackProductType = BUSS, BUSD, DOPD, DOPD, PRIV, PRID, RETD, SMAR, SMAD), then the country of the sender must equal the country of the receiver.	Country code according to the Country codebook



--- contact	string	Length: 50	No		Contact person.
--- phone	string	Length: 30	No		Completed contact details significantly increase the success rate of delivery
--- email	string	Length: 50	No		Completed contact details significantly increase the success rate of delivery
-- externalNumbers					
--- externalNumber	string	Length: 50	Yes		External number
--- code	string	Length: 4	Yes	Validation by the external numbers codebook	External number type code according to the External numbers codebook
-- services					Services for dormant shipments (PUBC)
--- code	string	Length: 4	Yes	For product-specific services, see the Services codebook.	Service code. Validation by Services codebook
-- weighedShipmentInfo					
--- weight	decimal	Length: 9.2	Yes	Weight must >= 0	The weight of the shipment weighed by the client.
- shipmentRouting					
- inputRouteCode	string	Length: 5			
- directInjection					Used in case of Direct Injection packages to foreign depot. At first must be approved on PPL side and discussed with sales representative
-- directAddressing	boolean			true / false	
-- gatewayZipCode	string	Length: 10			
-- gatewayCity	string	Length: 35			
-- country	string	Length: 2			
- labelService					
-- labelless	boolean			true / false	Option for selecting between classic label / QR code with smart PIN. Default is label. QR must be activated by sales representative
- shipmentsOrderBy	string				Sort labels - Referenceld, Shipment

## /shipment/batch/{batchId} – label creation statuses

[GET] <https://api.dhl.com/ecs/ppl/myapi2/shipment/batch/{batchId}>

BatchId from the previous method. The response is a URL (bulk or per package) to download the generated label.

## /shipment/batch/{batchId} – shipment set editing

[PUT] <https://api.dhl.com/ecs/ppl/myapi2/shipment/batch/{batchId}>

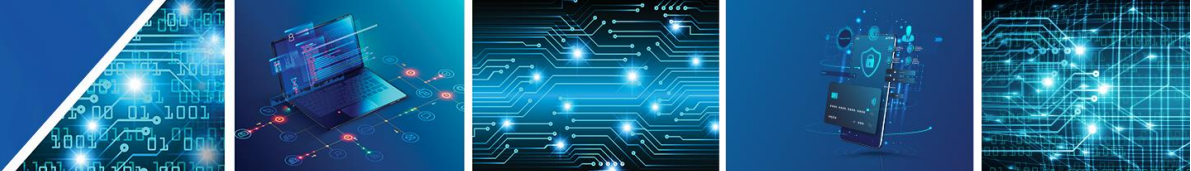
BatchId from the previous method. Possibility to change label format

## /shipment/batch/{batchId}/label - labels

[GET] <https://api.dhl.com/ecs/ppl/myapi2/shipment/batch/{batchId}/label>

Destination URL

Parameter name	Data type	Data format	Required field	Validation	Description
Position	integer		No		1,2,3,4 – starting position on A4
PageSize	string		No		Default, A4
Limit	integer		Yes		count per page
Offset	integer		Yes		page number - 0: 1st page, ..., 2: 3rd page, ...



## /shipment – Shipment information

[GET] <https://api.dhl.com/ecs/ppl/myapi2/shipment>

Headers: X-Paging-Total-Items-Count – Total number in response

It is used to obtain information about the shipment

Parameter name	Data type	Data format	Required field	Validation	Description
Limit	integer		Yes		count per page
Offset	integer		Yes		page number - 0: 1st page, ..., 2: 3rd page, ...
ShipmentNumbers	array[string]	Length: 50	No		Package number(s)
InvoiceNumbers	array[string]	Length: 2	No		Invoice number(s)
CustomerReferences	array[string]	Length: 10	No		References
VariableSymbols	array[string]	Length: 50	No		Variable symbol(s)
DateFrom	string(\$date-time)		No		Date from
DateTo	string(\$date-time)		No		Date to
ShipmentStates	string				Undelivered, Delivered, PickedUpFromSender, DeliveredToPickupPoint, OutForDelivery, NotDelivered, CodPaidDate, BackToSender, Rejected, DataShipment, Active, Dormant

## /shipment/{shipmentNumber}/cancel - Cancel

[POST] <https://api.dhl.com/ecs/ppl/myapi2/shipment/{shipmentNumber}/cancel>

Cancel the package if it has not been physically sent

## /shipment/{shipmentNumber}/redirect - Addition/change of information

[GET] <https://api.dhl.com/ecs/ppl/myapi2/shipment/{shipmentNumber}/redirect>

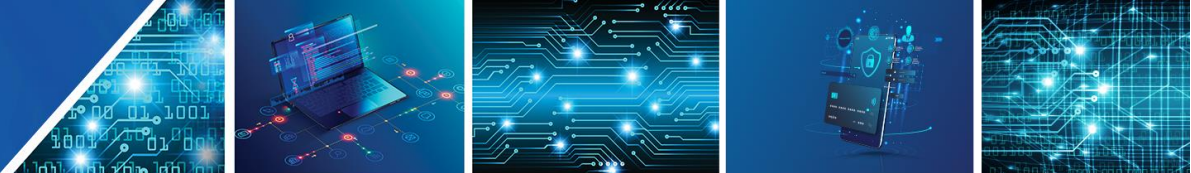
Add / change contact information to the package

Element name	Data type	Data format	Required field	Validation	Description
Contact	string	Length: 50	No		Contact
Phone	string	Length: 30	No		Phone
Email	string	Length: 50	No		Email

## /addressWhisper – Address whisperer

[GET] <https://api.dhl.com/ecs/ppl/myapi2/addressWhisper>

Parameter name	Data type	Data format	Required field	Validation	Description
CalledFrom	string	Length: 50	No		Options: Street, City, ZipCode
Street	string	Length: 50	No		Street
ZipCode	string	Length: 10	No		zipCode
City	string	Length: 50	No		City



## /accessPoint - List of Pick-up points

[GET] <https://api.dhl.com/ecs/ppl/myapi2/accessPoint>

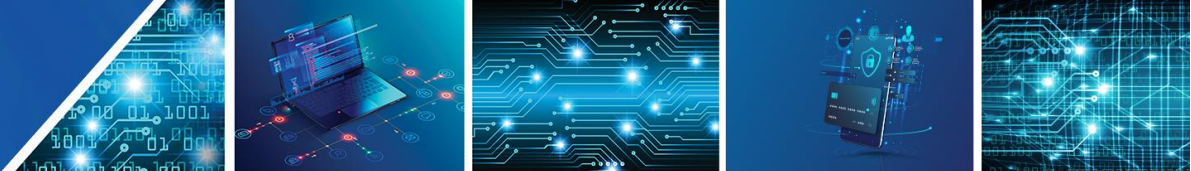
Headers: X-Paging-Total-Items-Count – Total number in response

Parameter name	Data type	Data format	Required field	Validation	Description
Limit	integer				count per page
Offset	integer				page number - 0: 1st page, ..., 2: 3rd page, ...
AccessPointCode	string	Length: 50	No		Pick-up code
CountryCode	string	Length: 2	No	CZ,SK,PL,DE	
ZipCode	string	Length: 10	No		ZipCode
City	string	Length: 50	No		City
AccessPointTypes	string		No		Directory of pick-up points
Radius	integer		No		Radius
Latitude	number		No		GPS coordinates
Longitude	number		No		GPS coordinates
ActiveCardPayment	boolean		No		Payment by card
Size	string		No		Maximum package size values: S, M, L, XL
pickupEnabled	boolean		No		the possibility of sending a package

## /data – label download

[GET] <https://api.dhl.com/ecs/ppl/myapi2/data/{dataGuid}>



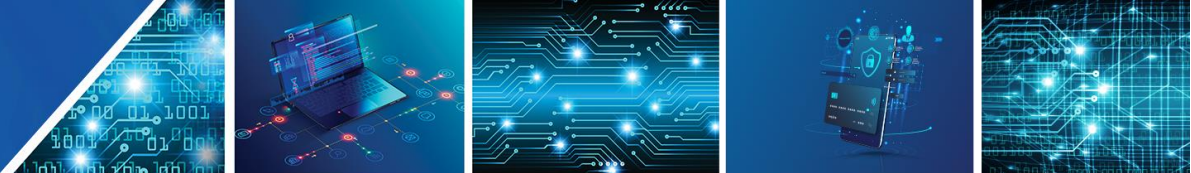


## /order/batch – Order creation

[POST] <https://api.dhl.com/ecs/ppl/myapi2/order/batch>

Used to create order. The answer is in the **header (Location)**

Element name	Data type	Data format	Required field	Validation	Description
<b>orders</b>					
- orderType			No	<b>CollectionOrder</b> – ordering a pickup, <b>TransportOrder</b> – order transport (Package from any address)	Order type
- referenceld			Yes		A unique reference!
- shipmentCount	string	Length: 2	No		Number of packages Max: 50
- email	string	Length: 50	No		Notification email for the customer.
- note					Note
- customerReference	string	Length: 9,2	No		Customer reference
- sendDate	string	Length: 9,2	Yes		Send date
- productType	string	Length: 9,2	Yes		BUSS / IMPO
- customerReference	string	Length: 9,2	Yes		
- sender					Sender
-- name	string	Length: 50	Yes		Name / Company
-- name2	string	Length: 50	No		Name 2
-- street	string	Length: 50	Yes		Street
-- city	string	Length: 50	Yes		City
-- zipCode	string	Length: 10	Yes		ZipCode
-- country	string	Length: 2	Yes	1. If it is an international shipment (PackProductType = IMPO), then the country of the recipient must not be the same as the country of the sender, and at the same time this field is mandatory. 2. If it is a domestic shipment (PackProductType = BUSS), then the recipient's country must be the same as the sender's country.	Country code according to the Country codebook
-- contact	string	Length: 50	No		Contact person.
-- phone	string	Length: 30	No		Completed contact details significantly increase the success rate of delivery
-- email	string	Length: 50	YES		Completed contact details significantly increase the success rate of delivery
- recipient				If collection ( CollectionOrder ) IS NOT FULFILLED	Sender of the shipment
-- name		Length: 50			Name / Company
-- name2	string	Length: 50	No		Name 2
-- street					Street
-- city	string	Length: 50	No		City
-- zipCode	string	Length: 10	Yes		ZipCode
-- country	string	Length: 2	No	If it is an international shipment (PackProductType = CONN), then the country of the recipient must not be equal to the country of the sender and at the same time this field is mandatory. - If it is a domestic shipment (PackProductType = BUSS), then the recipient's country must be the same as the sender's country.	Country code according to the Country codebook
-- contact	string	Length: 50	No	Phone	Contact person.
-- phone	string	Length: 50	Yes		
-- email	string	Length: 50	Yes		



## /order/batch/{batchId} – order creation statuses

[GET] <https://api.dhl.com/ecs/ppl/myapi2/order/batch/{batchId}>

The BatchId from the previous method. The answer is information about the successful generation of the order.

## /order – Order tracking

[GET] <https://api.dhl.com/ecs/ppl/myapi2/order>

Obtaining order information

Parameter name	Data type	Data format	Required field	Validation	Description
Limit	integer		Yes		count per page
Offset	integer		Yes		page number - 0: 1st page, ..., 2: 3rd page, ...
ShipmentNumbers	array[string]	Length: 50	No		Package number
OrderReferences	array[string]	Length: 50	No		Order reference
CustomerReferences	array[string]	Length: 50	No		Customer reference
OrderNumbers	array[string]	Length: 50	No		Order number
OrderIds	array[string]	Length: 50	No		Order ID
DateFrom	string(\$date-time)		No		Date from
DateTo	string(\$date-time)		No		Date to
SendDate	string(\$date-time)		No		Sent date
ProductType	string				Product type
OrderStates	string				Order state Created, PickedUp, NotPickedUp, Canceled

## /order/cancel – Cancel order

[POST] <https://api.dhl.com/ecs/ppl/myapi2/order/cancel>

Cancellation of CollectionOrder or TransportOrder

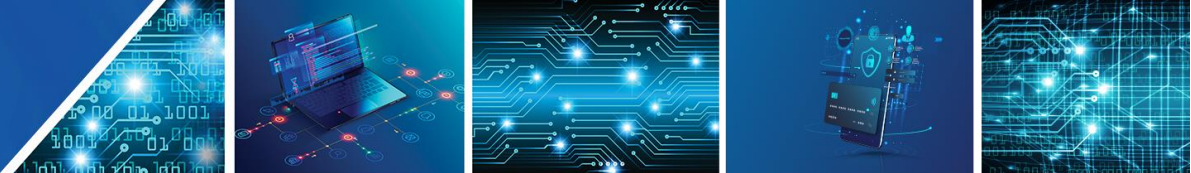
Parameter name	Type	Description
orderReferences	string	Order reference
customerReferences	string	Customer reference

## /odelist/servicePriceLimit – Services limits (COD, Insurance)

[GET] <https://api.dhl.com/ecs/ppl/myapi2/odelist/servicePriceLimit>

A method for obtaining service limit states.

Parameter name	Data type	Data format	Required field	Validation	Description
Limit	integer		Yes		count per page
Offset	integer		Yes		page number - 0: 1st page, ..., 2: 3rd page, ...
Service	string	Length: 50	No	INS,COD	Service
Currency	string	Length: 2	No	Currency codebook	Currency
Country	string	Length: 10	No	Country codebook	Country
Product	string	Length: 50	No	Products codebook	Product



## /codelist/service – Service codebook

[GET] <https://api.dhl.com/ecs/ppl/myapi2/codelist/service>

Method for obtaining the services provided for shipments. Occurs with shipment/batch or /shipment

Parameter name	Type	Description
Limit	integer	count per page
Offset	integer	page number - 0: 1st page, ..., 2: 3rd page, ...
Accept-Language	String	cs, en

### Response:

Element name	Type	Description
code	string	Service code
name	string	Service name
allowInput	True/false	True – it is possible to enter the service for the shipment False – the service is only informational

## /codelist/ageCheck – Codebook for the beneficiary's age verification service

[GET] <https://api.dhl.com/ecs/ppl/myapi2/codelist/ageCheck>

Parameter name	Type	Description
Limit	integer	count per page
Offset	integer	page number - 0: 1st page, ..., 2: 3rd page, ...
Accept-Language	String	cs, en

## /codelist/currency – Currency codebook

[GET] <https://api.dhl.com/ecs/ppl/myapi2/codelist/currency>

Parameter name	Type	Description
Limit	integer	count per page
Offset	integer	page number - 0: 1st page, ..., 2: 3rd page, ...
Accept-Language	String	cs, en

## /codelist/country – Country codebook + COD permission

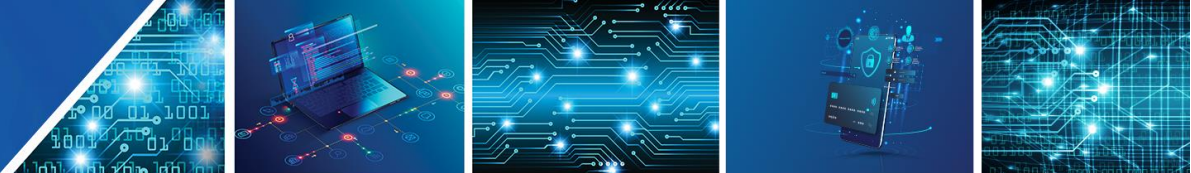
[GET] <https://api.dhl.com/ecs/ppl/myapi2/codelist/country>

Parameter name	Type	Description
Limit	integer	count per page
Offset	integer	page number - 0: 1st page, ..., 2: 3rd page, ...
Accept-Language	String	cs, en

## /codelist/externalNumber – External number codebook

[GET] <https://api.dhl.com/ecs/ppl/myapi2/codelist/externalNumber>

Parameter name	Type	Description
Limit	integer	count per page
Offset	integer	page number - 0: 1st page, ..., 2: 3rd page, ...
Accept-Language	String	cs, en



## /codelist/product – Product codebook

[GET] <https://api.dhl.com/ecs/ppl/myapi2/codelist/product>

Parameter name	Type	Description
Limit	integer	count per page
Offset	integer	page number - 0: 1st page, ..., 2: 3rd page, ...
Accept-Language	String	cs, en

## /codelist/proofOfIdentityType – Types of personal documents

[GET] <https://api.dhl.com/ecs/ppl/myapi2/codelist/proofOfIdentityType>

Parameter name	Type	Description
Limit	integer	count per page
Offset	integer	page number - 0: 1st page, ..., 2: 3rd page, ...
Accept-Language	String	cs, en

## /codelist/shipmentPhase – shipment phase

[GET] <https://api.dhl.com/ecs/ppl/myapi2/codelist/shipmentPhase>

Parameter name	Datový typ	Popis
Limit	integer	count per page
Offset	integer	page number - 0: 1st page, ..., 2: 3rd page, ...
Accept-Language	string	cs, en

## codelist/status – Shipment statuses /shipment

[GET] <https://api.dhl.com/ecs/ppl/myapi2/codelist/status>

Parameter name	Type	Description
Limit	integer	count per page
Offset	integer	page number - 0: 1st page, ..., 2: 3rd page, ...
Accept-Language	string	cs, en

## /codelist/validationMessage – Error messages

[GET] <https://api.dhl.com/ecs/ppl/myapi2/codelist/validationMessage>

Used to obtain information about the shipment

Parameter name	Type	Description
Limit	integer	count per page
Offset	integer	page number - 0: 1st page, ..., 2: 3rd page, ...

## /info – API status info

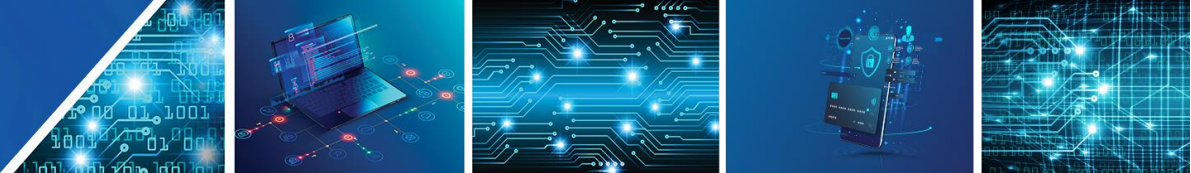
[GET] <https://api.dhl.com/ecs/ppl/myapi2/info>

## /customer – customer information - permitted currencies

[GET] <https://api.dhl.com/ecs/ppl/myapi2/customer>

Parameter name	Type	Description
Limit	integer	count per page
Offset	integer	page number - 0: 1st page, ..., 2: 3rd page, ...
Accept-Language	String	cs, en





## **/customer/address - customer information – customer addresses**

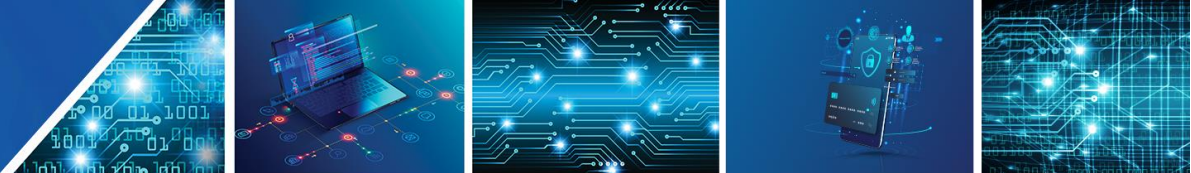
[GET] <https://api.dhl.com/ecs/ppl/myapi2/customer/address>

## **/versionInformation - Version information (news...)**

[GET] <https://api.dhl.com/ecs/ppl/myapi2/versionInformation>

The method is used to obtain news, information, scheduled downtime, and other important information related to (not only) CPL.

Parameter name	Type	Description
Limit	integer	count per page
Offset	integer	page number - 0: 1st page, ..., 2: 3rd page, ...
Language	string	Selected language - en/en (default CS)



# Enums – Other parametr

## Import statuses

Name	Description
ACCEPTED	Request accepted
InProcess	It is being processed
Complete	Done
Error	ERROR

## Address types codebook

Description	Code	(Internal ID)	Condition
Address for the return of undelivered shipments	BP	BUSS, BUSD, DOPD, DOPD, COPL, BUED, PRIV,PRID, CONN, COND	
Return Shipment Address/Service	RETD	PRIV, PRID, RETD, SMAR, SMAD	Only with PPL Parcel CZ Private + COD products
Return address/service for Return connect shipments	RETC	CONN, COND, SMEU, SMED, RECI, RECE	Only with Parcel Connect products

## Pick-up points type codebook - accessPointTypes

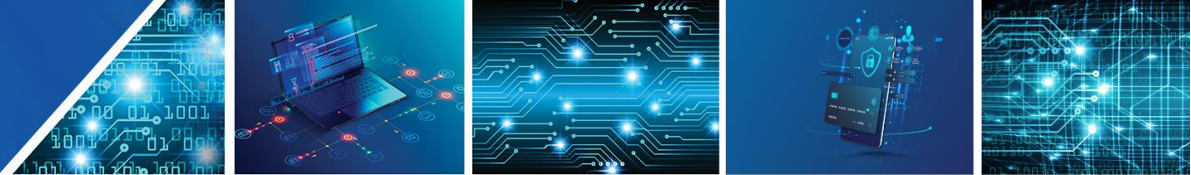
Name	Code
ParcelShop	ParcelShop
ParcelBox	ParcelBox
<b>Alzabox</b>	Alzabox

## ReturnChannelModel – Type codebook

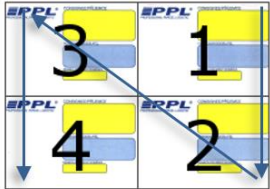
Name	Code	Description
None	-	The output is a URL
Email	Email	Output to Email

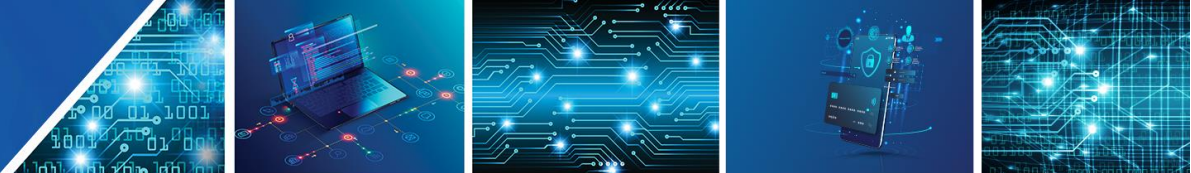
## LabelSettingModel - Label format codebook

Name	Code	Description
PDF	Pdf	PDF document
ZPL	Zpl	ZPL instructions
JPEG	Jpeg	JPEG image
SVG	svg	graphic file
PNG	Png	Graphic file



## Label type codebook

Name	Code	Description
None	-	Default type is 150x100
Default	<b>Default</b>	Default type is 150x100
Page A4	<b>A4</b>	Page A4 - selectable positions 1-4(position) 



# Examples of calls and answers

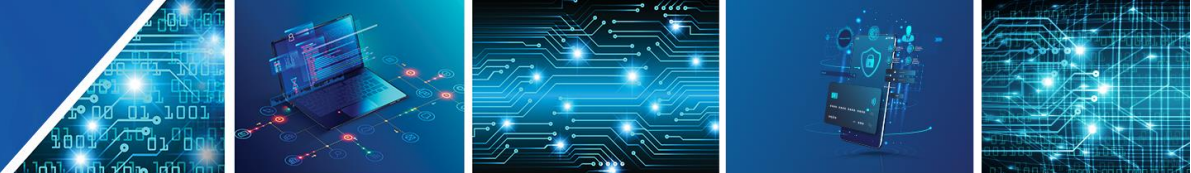
## Request

[POST] <https://api.dhl.com/ecs/ppl/myapi2/shipment/batch>

**PPL Parcel CZ Private to ParcelShop, AgeCheck 15+ with return shipment and driver pick up service.**

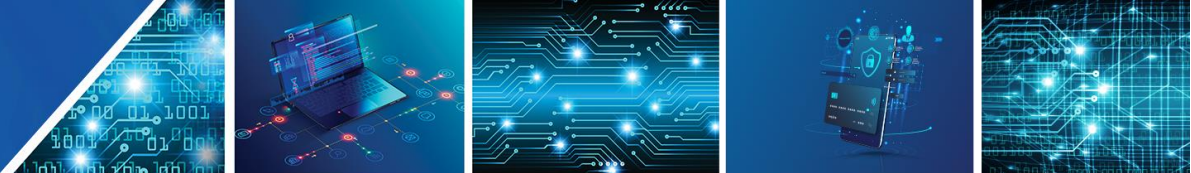
```
{
  "returnChannel":{
    "type":"Email",
    "address":"test@test.cz"
  },
  "labelSettings":{
    "format":"Pdf",
    "dpi":300,
    "completeLabelSettings":{
      "isCompleteLabelRequested":true,
      "pageSize":"A4",
      "position":1
    }
  },
  "shipments":[
    {
      "referenceId":"Reference03",
      "productType":"PRID",
      "note":"Poznamka",
      "depot":"07",
      "ageCheck":"A15",
      "integratorId":"123456",
      "shipmentSet":{
        "numberOfShipments":2
      },
      "sender":{
        "name":"Name sender",
        "street":"Street sender 99",
        "city":"Olomouc",
        "zipCode":"77200",
        "country":"CZ",
        "contact":"Contact sender",
        "phone":"+420777999888",
        "email":"test@test.cz"
      },
      "recipient":{
        "name":"Recipient Pepa",
        "street":"Novoveská 1262/95",
        "city":"Ostrava",
        "zipCode":"70900",
        "country":"CZ",
        "contact":"Kontakt příjemce",
        "phone":"+420777888999",
        "email":"test@test.cz"
      },
      "specificDelivery":{
        "parcelShopCode":"KM10479401"
      },
      "cashOnDelivery":{
        "specSymbol":null,
        "account":"1645767019",
        "accountPre":null,
        "bankCode":"3030",
        "codPrice":"2500",
        "codCurrency":"CZK",
        "codVarSym":"214452"
      },
      "insurance":{
        "insurancePrice":"56000",
        "insuranceCurrency":"CZK"
      }
    }
  ]
}
```





```
},
"externalNumbers":[
  {
    "externalNumber":"Cust_0001",
    "code":"CUST"
  },
  {
    "externalNumber":"Ext_001",
    "code":"B2CO"
  }
],
"dormant":{
  "note":"Poznamka return",
  "depot":"07",

  "recipient":{
    "name":"Name return",
    "street":"Street return 99",
    "city":"Olomouc",
    "zipCode":"77200",
    "country":"CZ",
    "contact":"Contact return",
    "phone":"+420777999888",
    "email":"test@test.cz"
  },
  "services":[
    {
      "code":"PUBC"
    }
  ]
}
]
}
```



## Response - Request Status:

The batchId is in the reply header (Location).

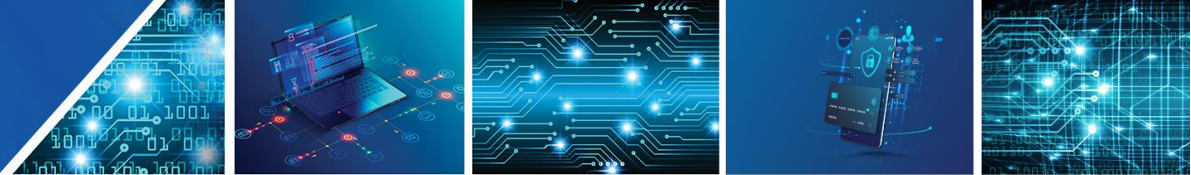
[GET] <https://api.dhl.com/ecs/ppl/myapi2/shipment/batch/d7915f5b-46d9-49fb-a073-969d62a7a2de>

1. In answer, the status is

```
{
  "items": [
    {
      "referenceId": "1",
      "importState": "InProgress",
      "relatedItems": []
    }
  ]
}
```

2. Or the URL for "pick-up"

```
{
  "completeLabel": {
    "labelUrls": [
      "https://api-dev.dhl.com/ecs/ppl/myapi2/shipment/batch/2105/label?pageSize=A4&position=1&limit=200&offset=0"
    ]
  },
  "items": [
    {
      "referenceId": "Reference03",
      "shipmentNumber": "44682090703",
      "labelUrl": " https://api.dhl.com/ecs/ppl/myapi2/data/8a06f022-54c1-4e80-a09a-08d9fd099011",
      "importState": "Complete",
      "relatedItems": [
        {
          "shipmentNumber": "60600016233",
          "labelUrl": " https://api.dhl.com/ecs/ppl/myapi2/data/998af2a2-9caf-47f7-a099-08d9fd099011",
          "importState": "Complete",
          "relationType": "Dormant"
        },
        {
          "shipmentNumber": "44682090702",
          "labelUrl": " https://api.dhl.com/ecs/ppl/myapi2/data/1fa00d69-bd5f-4afe-a098-08d9fd099011",
          "importState": "Complete",
          "relationType": "ShipmentSet"
        }
      ]
    }
  ]
}
```



## Response - pick up labels (PDF A4)

[GET] <https://api.dhl.com/ecs/ppl/shipment/batch/d7915f5b-46d9-49fb-a073-969d62a7a2de/label?pageSize=A4&position=1&limit=200&offset=0>

### Preview generated in Postman

PPL Parcel CZ Private - dobírka  
Designové / Příjemce: <https://www.ppl.cz>

**EPPL**<sup>®</sup>  
PROFESSIONAL PARCEL LOGISTIC

79401 07407  
79401 DEN  
77

**Kontakt příjemce**  
PPL Parcelshop 104  
nam. Hrdinu 925/10  
Krnov  
**79401**  
Kontakt příjemce:  
Tel.: +420777889999

Designové / Odesílatel: Odlišeno tiskem od reality: 0.3.2022

**Name sender**  
Street sender 99  
Olomouc  
77200

Posil.: Pozvánka  
Ref.: Cust\_3001

44682090703  
COD/DOB: 2500.00 CZK

15+  
1/2

PPL Parcel Return CZ  
Designové / Příjemce: <https://www.ppl.cz>

**EPPL**<sup>®</sup>  
PROFESSIONAL PARCEL LOGISTIC

77200 09001  
77200 A9

**Name return**  
Street return 99  
Olomouc  
**77200**  
Contact return  
Tel.: +420777999988

Designové / Odesílatel: Odlišeno tiskem od reality: 0.3.2022

**Pepa**  
Novoveska 1262/95  
Ostrava  
70900

Posil.: Pozvánka return

60600016233

1/1

PPL Parcel CZ Private - dobírka  
Designové / Příjemce: <https://www.ppl.cz>

**EPPL**<sup>®</sup>  
PROFESSIONAL PARCEL LOGISTIC

79401 07407  
79401 DEN  
77

**Kontakt příjemce**  
PPL Parcelshop 104  
nam. Hrdinu 925/10  
Krnov  
**79401**  
Kontakt příjemce:  
Tel.: +420777889999

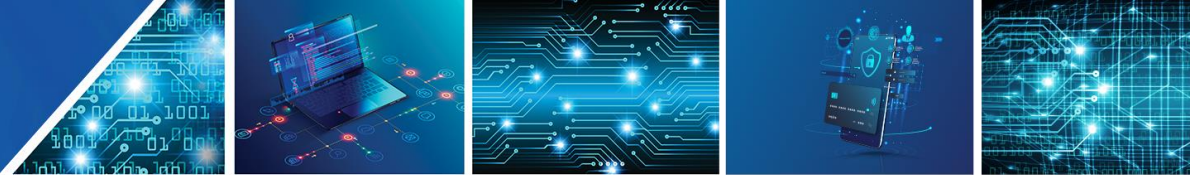
Designové / Odesílatel: Odlišeno tiskem od reality: 0.3.2022

**Name sender**  
Street sender 99  
Olomouc  
77200

Posil.: Pozvánka  
Ref.: Cust\_3001

44682090702  
COD/DOB: 0.00 CZK

15+  
2/2



## Response - label pickup (ZPL)

```
{
  "items": [
    {
      "referenceId": "1",
      "shipmentNumber": "80640803552",
      "labelUrl": "https://api.dhl.com/ecs/ppl/myapi2/data/6101c001-959d-444d-a09c-08d9fd099011",
      "importState": "Complete",
      "relatedItems": []
    }
  ]
}
```

## Preview generated in Postman

```
^XA^PQ1^MUd^PW807^MNY^LH0,0^PMN^FO748,652^GB,214,6,B^FS^FO742,652^GB,214,3,B^FS^FO733,652^GB,214,3,B^FS^FO711,652^
GB,214,9,B^FS^FO705,652^GB,214,3,B^FS^FO693,652^GB,214,6,B^FS^FO684,652^GB,214,3,B^FS^FO668,652^GB,214,10,B^FS^FO659,6
52^GB,214,6,B^FS^FO647,652^GB,214,6,B^FS^FO632,652^GB,214,9,B^FS^FO626,652^GB,214,3,B^FS^FO613,652^GB,214,7,B^FS^FO604,
652^GB,214,3,B^FS^FO589,652^GB,214,9,B^FS^FO583,652^GB,214,3,B^FS^FO568,652^GB,214,9,B^FS^FO558,652^GB,214,7,B^FS^FO54
3,652^GB,214,9,B^FS^FO537,652^GB,214,3,B^FS^FO525,652^GB,214,6,B^FS^FO516,652^GB,214,3,B^FS^FO500,652^GB,214,10,B^FS^FO
491,652^GB,214,6,B^FS^FO479,652^GB,214,6,B^FS^FO470,652^GB,214,3,B^FS^FO458,652^GB,214,9,B^FS^FO445,652^GB,214,6,B^FS^F
O433,652^GB,214,9,B^FS^FO424,652^GB,214,3,B^FS^FO412,652^GB,214,6,B^FS^FO400,652^GB,214,9,B^FS^FO390,652^GB,214,3,B^FS^
FO378,652^GB,214,6,B^FS^FO366,652^GB,214,9,B^FS^FO357,652^GB,214,3,B^FS^FO348,652^GB,214,3,B^FS^FO335,652^GB,214,6,B^F
S^FO323,652^GB,214,9,B^FS^FO314,652^GB,214,3,B^FS^FO299,652^GB,214,9,B^FS^FO290,652^GB,214,6,B^FS^FO277,652^GB,214,6,B^
FS^FO262,652^GB,214,9,B^FS^FO256,652^GB,214,3,B^FS^FO247,652^GB,214,3,B^FS^FO231,652^GB,214,10,B^FS^FO219,652^GB,214,6,
B^FS^FO213,652^GB,214,3,B^FS^FO198,652^GB,214,9,B^FS^FO186,652^GB,214,6,B^FS^FO180,652^GB,214,3,B^FS^FO164,652^GB,214,
9,B^FS^FO152,652^GB,214,6,B^FS^FO140,652^GB,214,9,B^FS^FO128,652^GB,214,6,B^FS^FO121,652^GB,214,4,B^FS^FO109,652^GB,21
4,6,B^FS^FO91,652^GB,214,9,B^FS^FO85,652^GB,214,3,B^FS^FO76,652^GB,214,6,B^FS^FWI^FT500,630^A0,,22^FD80640803555-
06111^FS^CI13^FWI^FT519,965^A0,N,56^FD60200^FS^CI13^FWI^FT740,901^A0,N,112^FD06
^FS^CI13^FWI^FT273,944^A0,N,84^FD06111^FS^FWI^FT591,954^A0,,68^FD^FS^FO64,16^GB356,611,2,B^FS^FWB^FT58,619^A0,,17^FDC
onsignee / Prijemce:^FS^FWB^FT445,619^A0,,17^FDConsignor /
Odesilatel:^FS^FO450,16^GB225,611,2,B^FS^FO729,16^GB64,136,2,B^FS^FWB^FT104,619^A0,,32^FDRRecipient name
s.r.o.^FS^FWB^FT128,619^A0,,32^FD^FS^FWB^FT214,619^A0,,32^FDZelezna
7/681^FS^FWB^FT269,619^A0,,32^FDBrno^FS^FWB^FT488,619^A0,,32^FDName sender B^FS^FWB^FT536,619^A0,,32^FDNove sady
2^FS^FWB^FT585,619^A0,,32^FDBrno^FS^FWB^FT634,619^A0,,32^FD60200^FS^FWB^FT347,619^A0,,62^FD60200^FS^FWB^FT378,619^
A0,,25^FDRecipient contact^FS^FWB^FT409,619^A0,,25^FDTel.:^FS^FWB^FT703,627^A0,,20^FDPozn.: test
12345^FS^FWB^FT711,627^A0,,20^FD^FS^CI13^FWB^FT781,115^A0,N,56^FD1/1^FS^FWB^FT58,432^A0,,17^FDhttps://www.ppl.cz^FS^FW
B^FT32,619^A0,,20^FDPPL Parcel CZ
Business^FS^FO599,308^GB68,,3,B^FS^FO599,303^GB68,,3,B^FS^FO599,295^GB68,,5,B^FS^FO599,289^GB68,,3,B^FS^FO599,284^GB68
,,2,B^FS^FO599,273^GB68,,5,B^FS^FO599,265^GB68,,2,B^FS^FO599,259^GB68,,3,B^FS^FO599,251^GB68,,5,B^FS^FO599,243^GB68,,5,B
^FS^FO599,235^GB68,,2,B^FS^FO599,229^GB68,,3,B^FS^FO599,221^GB68,,3,B^FS^FO599,213^GB68,,2,B^FS^FO599,205^GB68,,5,B^FS^
FO599,196^GB68,,6,B^FS^FO599,188^GB68,,3,B^FS^FO599,183^GB68,,2,B^FS^FO599,174^GB68,,3,B^FS^FO599,164^GB68,,5,B^FS^FO5
99,155^GB68,,6,B^FS^FO599,150^GB68,,3,B^FS^FO599,142^GB68,,5,B^FS^FO599,134^GB68,,2,B^FS^FO599,125^GB68,,6,B^FS^FO599,1
17^GB68,,3,B^FS^FO599,112^GB68,,2,B^FS^FO599,103^GB68,,6,B^FS^FO599,95^GB68,,3,B^FS^FO599,87^GB68,,6,B^FS^FO599,82^GB6
8,,2,B^FS^FO599,73^GB68,,3,B^FS^FO599,65^GB68,,6,B^FS^FO599,60^GB68,,3,B^FS^FWB^FT17,259^A0,,39^FD80640803555^FS^FWB
^FT409,567^A0,,25^FD+420554123456^FS^FWB^FT56,278^A0,,54^FDPPL CZ s.r.o.^FS^FWB^FT445,243^A0,,17^FDDatum tisku etikety:
9.3.2022^FS^XZ
```

## Response - picking up labels (JPG)

Preview generated in Postman

```
{
  "items": [
    {
      "referenceId": "1",
      "shipmentNumber": "80640803553",
      "labelUrl": "https://api-dev.dhl.com/ecs/ppl/myapi2/data/0c0a4d30-785a-4ba3-a09d-08d9fd099011",
      "importState": "Complete",
      "relatedItems": []
    }
  ]
}
```



response.jpeg

06  
60200  
06111



PPL Parcel CZ Business Consignee / Příjemce: <a href="https://www.HF.ppl.cz">https://www.HF.ppl.cz</a>			
<b>Recipient name s.r.o.</b>			
Zelezna 7/681 Brno <b>60200</b>			
Recipient contact Tel.: +420554123456			
Consignor / Odesílatel.		Datum tisku etikety: 9.3.2022	
<b>Name sender B</b>			
Nove sady 2 Brno 60200			
Pozn.: test 12345		<b>80640803554</b>	
		<div style="border: 1px solid black; padding: 2px; display: inline-block;">1/1</div>	

## Response – GET/shipment/batch - identification of an error shipment in the case of multiple pcs

If the GET/shipment/batch method calls multiple shipments and returns a 400 status error, the faulty shipment is displayed in errors, where the order of the shipment is determined by the number in brackets [1] counted from 0.

```
1 {
2   "type": "https://asp.net/core",
3   "title": "BadRequest",
4   "status": 400,
5   "detail": "Please refer to the errors property for additional detail",
6   "instance": "/shipment/batch",
7   "errors": {
8     "Shipments[1]": [
9       "Unknown parcel shop code"
10    ]
11  }
12 }
```